

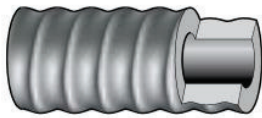
# ROCBOLT Self-drilling Hollow Bar Anchor System



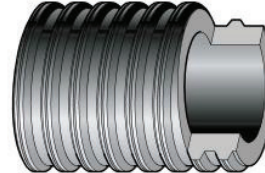
## Features

- Fast drilling and placing due to drilling, anchor installation and grouting in a single operation
- Neither separate anchor installation nor removal of casing and drill rods
- Similar installation methods for all ground conditions
- Choice of drill bits for different ground conditions
- Hollow core not only serves for flushing with air or water during drilling, but also for grouting the anchor tendon
- Flexibility in length by using couplers
- Ability to work with small drill rigs without casing in restricted headroom conditions
- Accommodation of needs for enhanced protection against corrosion upon request
- High standard of quality control from production stage to the installation of the ROCBOLT Self-drilling Hollow Bar Anchor ensures consistent quality
- Advantageous in all applications where normally cased drilling is required
- Allows for anchoring in both cohesive and non-cohesive ground, even under limited space conditions.

Drill Rope Thread RH



Drill 'T' Thread RH



## ROCBOLT Self-drilling Hollow Bar Anchor System

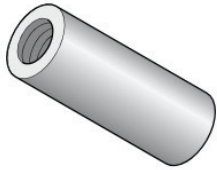
Technical Data								
Outer Diameter, mm	R25N	R32S	R38N	R51N	T40	T40	T52	T76S
Inner Diameter, mm	12	17	22	33	16	20	26	45
Cross Sectional area, mm <sup>2</sup>	292	440	611	968	910	713	1250	2400
Yield Load*, kN	150	280	400	630	525	430	730	1500
Ultimate Load*, kN	200	360	500	800	660	540	929	1900
Weight, kg/m	2.3	3.45	5.5	7.8	7.15	5.8	9.9	19

\* Ultimate and Yield Load capacity are measured values.

## Notes

- Minimum order quantities may apply to this product
- Only ROCBOLT Technologies South Africa components should be used to enable the full performance of the bolt system to be obtained.

# ROCBOLT Self-drilling Hollow Bar Anchor System



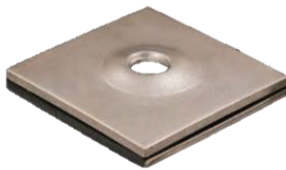
Anchor Coupler

Technical Data		
	Length	Outside Diameter
R25N/12	150	36
R32S/17	190	42
R38N/22	220	52
R51N/33	200	63
T40/16	140	57
T52/26	160	70
T76S/45	220	95



Anchor Nut

Technical Data		
	Length	Across Flat
R25N/12	41	41
R32S/17	65	46
R38N/22	60	50
R51N/33	70	75
T40/16	50	65
T52/26	70	80
T76S/45	80	100



Anchor Plate

Technical Data			
	Size	Hole Diameter	Thickness
R25N/12	150x150	30	8
R32S/17	200x200	35	12
R38N/22	200x200	41	12
R51N/33	250x250	60	30
T40/16	200x200	54	16
T52/26	220x220	65	35
T76S/45	250x250	80	60



Anchor Centralizer

Technical Data		
	OD	Length
R32S/17	72	30
R38N/22	72	41
R51N/33	92	54
T40/16	88	43
T52/26	112	55

## Notes

- Minimum order quantities may apply to this product
- Only ROCBOLT Technologies South Africa components should be used to enable the full performance of the bolt system to be obtained.